

M2M EASY 2 SECURITY COMMUNICATOR®

Alarm signal transmission through GSM/GPRS network

Multifunctional device for transmitting the Contact ID signals of alarm systems through GSM/GPRS network toward dispatching or alarm centers.

The device is able to signaling remotely to any IP receiver or for the alarm centre. It is also able to sense the received alarm events on input lines independently from an external alarm system, when the Customer is notified.

The relay output can control a connected device remotely - without any cost.

Communication

- Analog voice-call based alarm signaling through GSM to the alarm centre or by phone line
- GPRS data transmitting (to IP receiver or IP address (primary & secondary))
- Sending life signals through GSM/GPRS
- Generating alarms for signal changes of input lines
- SMS alarm notification (up to 4 phone numbers)
- Remote control by SMS message/phone ringing
- Various protocols, Contact ID international format, compatibility with several alarm systems

Connection

- 2pcs inputs (voltage/contact): sensing input status changes, generate alarms
- 1pcs output (remote control/switching)
- Alarm Tip-Ring input (for an alarm system)
- Serial connection (configuring parameters)

Safety

- Reliable operation, automatic network recovery
- Easy installation, parametrizing software
- Remote/local configuration/firmware updates
- LED display (status/failure/signal strength)



Application

- ▶ Transmission to dispatcher centre
- ▶ Transmitter for alarm systems
- ▶ Standalone alarm signaling
- ▶ Safety tasks
- ▶ Remote control (gate opening, boiler control, switching)
- ▶ Remote monitoring of input lines



M2M Easy 2 Security Communicator®



Configuration parameters

- Alarm dispatching centre/IP receiver settings
- Alarm and zone settings
- Free to configure life signal sending intervals
- Report and SMS notification settings
- Input settings (for 2pcs input lines)
- Relay output settings (for 1pcs output)
- Remote server parameters
- IO & wireless Zigbee expansion settings
- Terminal emulation (log, AT commands)
- Firmware updates
- Saving/loading configuration file

Remote gate opening

- With SMS commands or by phone ringing
- Bi-stable or mono-stable operation mode (delay can be configured up to 1 day)
- Max 125 phone numbers in contact list

Software updates

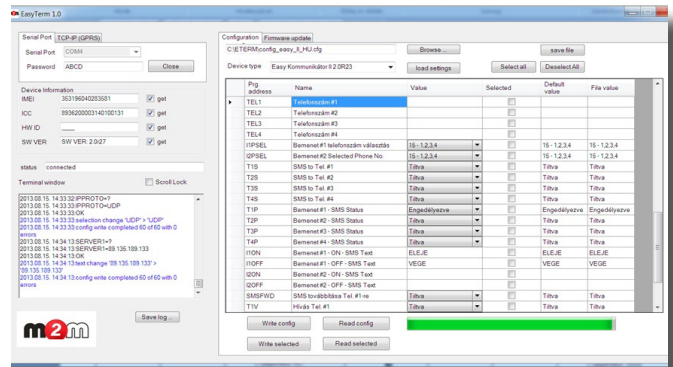
- Locally, through serial port
- From Ftp server
- Through TCP/IP connection

Configuration

- Locally, through serial port
- With SMS commands
- Through TCP/IP connection

Remote control

- With SMS commands
- Through TCP/IP connection
- Contact output control with SMS commands or by phone ringing



Technical data

| M2M Easy 2 Security Communicator® | | |
|-----------------------------------|----------------------|--|
| Power Voltage | | 8-24VDC, 800mA |
| Current | | - stand-by: 40-65mA 12V - max.: 130mA (1800MHz 1W/900MHz 2W) |
| Communication module | Mobile Standards | GSM/GPRS |
| | Modem type | Gemalto BG2-E |
| | Frequency (Mhz) | GSM 900/1800 |
| | Speed (DL/UL) | max. 85.6/21.4 kbps |
| Communication | Protocol | Alarm centre protocols, TCP, UDP based communication |
| | Compatibility | Contact ID, SIA, CID/DTMF, Enigma (M2M Digital Receiver), WM-Alarm |
| SIM card | Availability | Normal SIM card |
| Antenna | Mount | 1x 2G conn., SMA |
| | Feed point impedance | 50 Ohms unbalanced |
| Interfaces | Connectors | - 2pcs voltage/contact input (jumperable, galvanical independent, terminal block) - 1pcs relay output (terminal block) - 1pcs simulated analog phone line (ALARM TIP-RING, terminal block) - Power connection (8-24VDC, 800mA, terminal block) - Serial connector (RJ11) - configuration, software updates |
| | Signal level | - Input line high level: 5-24V - Input line low level: 0-1V - Current in active mode (contact input): 0,3-1mA - Controllable output, load: 2A - 120VAC, 1A - 24VDC |
| User interface | Configuration | - EasyTerm® software (config., parametrizing, software updates) - SMS commands - TCP/IP connection |
| | Indication | Status LEDs: Voltage/contact input status, Relay output status, Alarm center connection health, GSM modem communication, Operation/Signal strength |
| Temperature, conditions | Operating | between -40°C and +70°C |
| | Storage | between -40°C and +80°C |
| Construction | Humidity | 0-95% rel. |
| | Housing | Optional plastic coverage, mountable to DIN-rail |
| | Protection | IP21 |
| | Dimension | 96x77x20mm |
| Weight | 260gr | |



The images on the data sheet are for illustration purposes only. WM Systems LLC. cannot be held liable for erroneous information on the data sheet. The announced data are subject to change without notice. The details on the data sheet are for general information purposes only. For more details, please contact us.